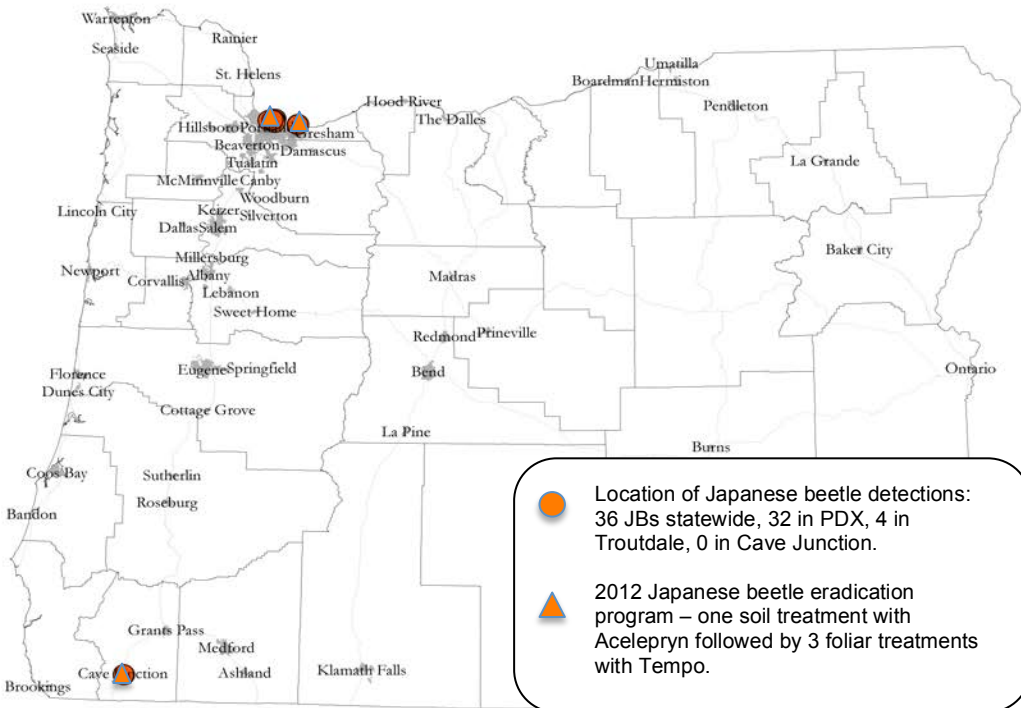


# Japanese Beetle in Oregon – 2012 –



## Japanese Beetle Detection and Eradication Programs in Oregon - 2012

Barry B. Bai and Helmuth W. Rogg  
Oregon Department of Agriculture, Plant Division  
635 Capitol St. NE, Salem, OR 97301

Oregon Department of Agriculture (ODA) puts high priority on detection and eradication of Japanese beetle (JB, *Popillia japonica*). ODA also has quarantine rules in place and conducts inspections to prevent new introductions on aircrafts and nursery stock from infested states. Since 1988, ODA has trapped 361 JB and conducted four successful JB eradication programs.

**Trapping** In 2012, a total of 2,215 JB traps were placed in 18 of 36 Oregon counties. About 1,146 were delimitation traps placed in the Portland metro area, in Troutdale and in Cave Junction, where JB were caught in previous years. The remaining 1,069 were detection traps deployed to high-risk sites in cities, towns, and rural areas throughout the state. This year, ODA caught 36 Japanese beetles statewide, of which 32 were found around the Portland International Airport (PDX) and four in Troutdale. No Japanese beetles were caught in Cave Junction where 14 JB were trapped in 2011 and five were caught in 2010. This site requires one more year of negative trapping before we can declare the JB infestation eradicated.

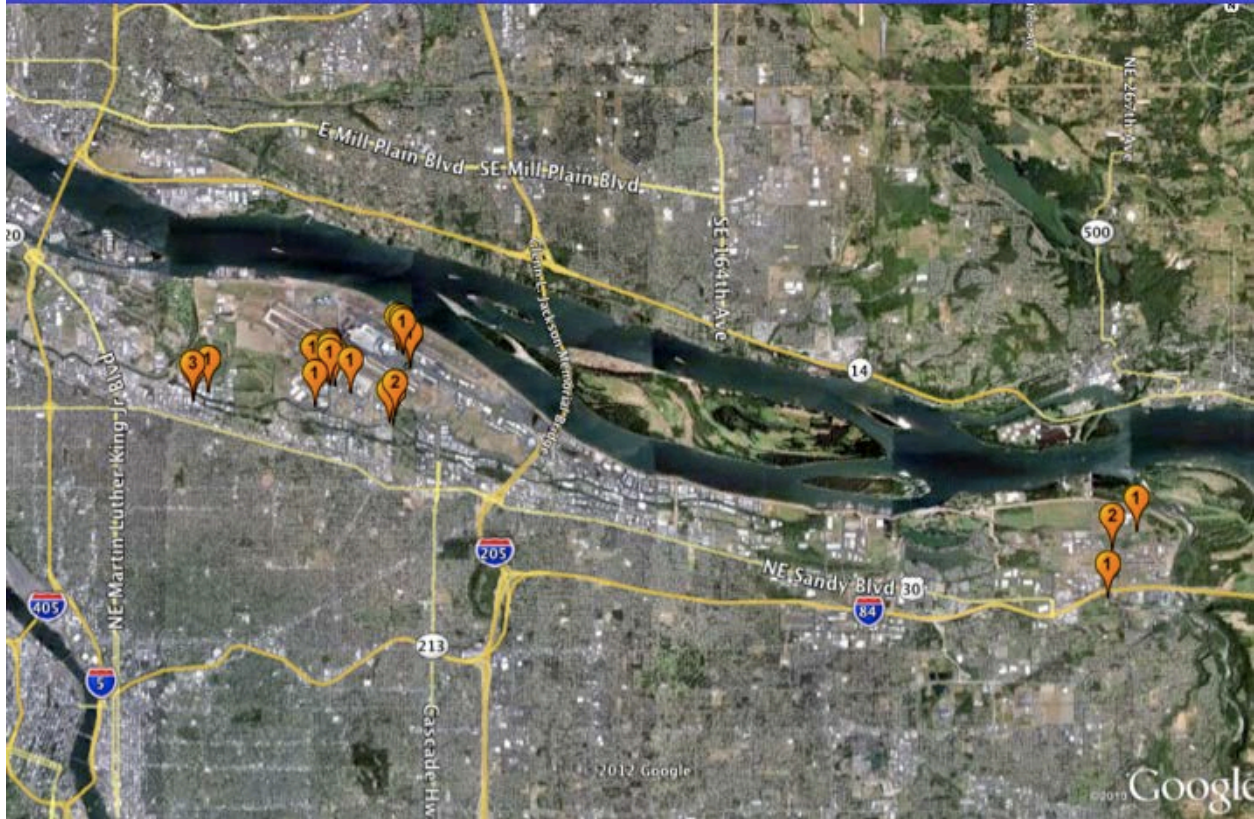
**Eradication** This year, ODA conducted JB eradication programs at five sites: PDX airport entrance (12 acres), PDX Airtrans Center (95 acres), Colwood Golf Course (47 acres), Troutdale (72 acres), and Cave Junction (38 acres), totaling 264 acres. All sites had JB catches in 2011. Treatments consisted of Acelepryn soil applications against JB larvae, which were conducted in May, followed by foliar Tempo SC Ultra applications against adults in July and August. Tempo SC Ultra was applied three times, each application spaced about two weeks apart. All treatment sites received larval and adult treatments, except the PDX airport entrance site, which only was treated with Acelepryn against the JB larvae. FedEx conducted the JB eradication treatments at its Troutdale facility with instruction and technical support from ODA. At the request of some residents of the Cave Junction site, ODA treated their backyard fruit trees and vegetable gardens with Sevin (in stead of Tempo).

Since 2008, ODA has worked closely with the Port of Portland Authority on the JB prevention and eradication efforts at PDX. Port of Portland has also contributed to the treatment costs at Airtrans Center of PDX and has assisted in the outreach efforts by distributing maps, posters, signs, pesticide information, and treatment schedules to business tenants.

**Airplane Inspection** Due to the risk of adult Japanese beetles hitchhiking on aircraft, USDA APHIS PPQ monitors JB populations at eastern airports each year. As soon as population levels pose a risk of live beetles entering aircrafts, the airport becomes regulated. A biweekly national conference call was set up to share JB information among all stakeholders. Due to reduced funding from USDA, only high risk airports in the eastern infested states were monitored since 2011. In 2012, five airports in four states were regulated by PPQ for JB. At PDX, ODA conducted 50 cargo airplane inspections and found no beetles on the planes. Inspected cargo carriers included FedEx from Indianapolis, IN, and UPS from Louisville, KY. These two carriers have direct flights from infested states to Oregon.

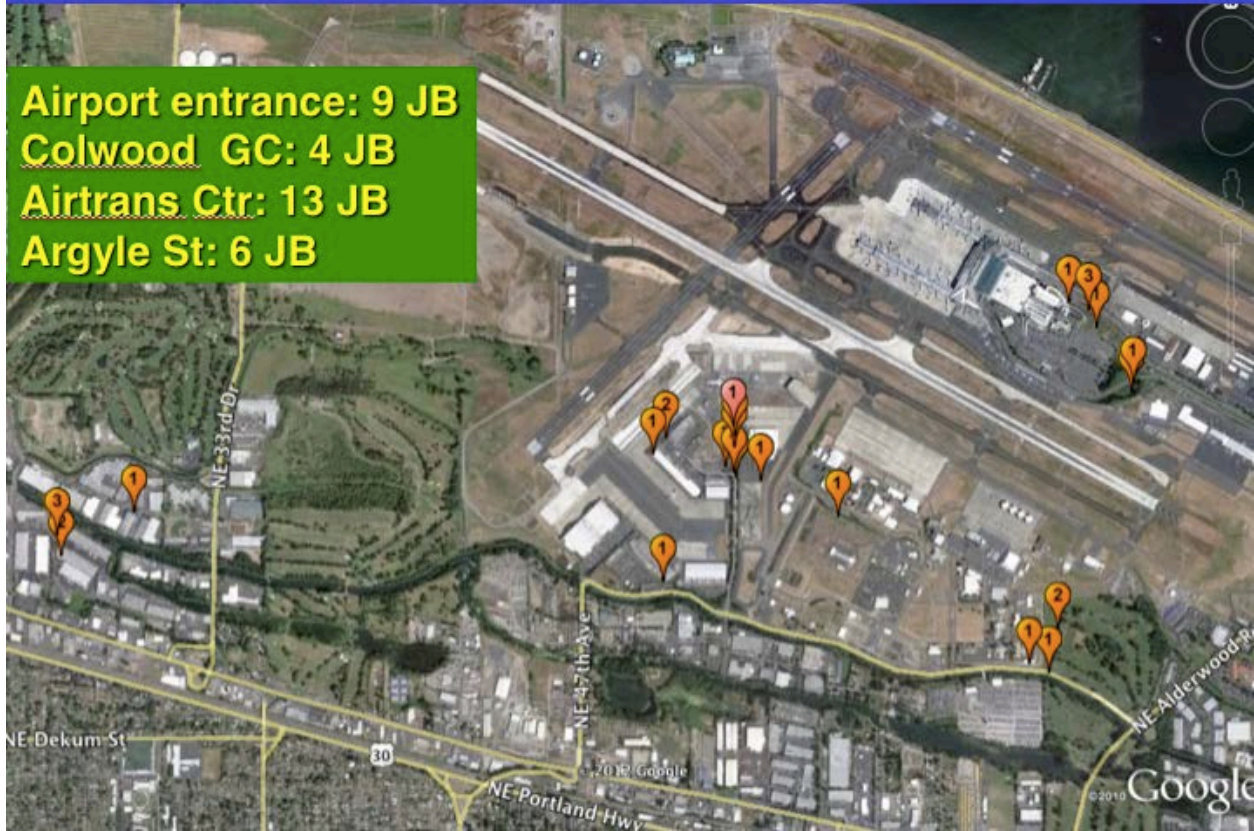
Continued cooperation, monitoring, information sharing, and commitment among state and federal regulators, industry representatives, and private citizens are critical to reducing the risk of introduction and establishment of JB in Oregon.

## 2012 JB catches in Oregon – 36 beetles



## 2012 JB catches in PDX and Vicinity – 32 beetles

**Airport entrance: 9 JB**  
**Colwood GC: 4 JB**  
**Airtrans Ctr: 13 JB**  
**Argyle St: 6 JB**



## 2012 JB catches in Troutdale – 4 beetles



# JB catches for Cave Junction

