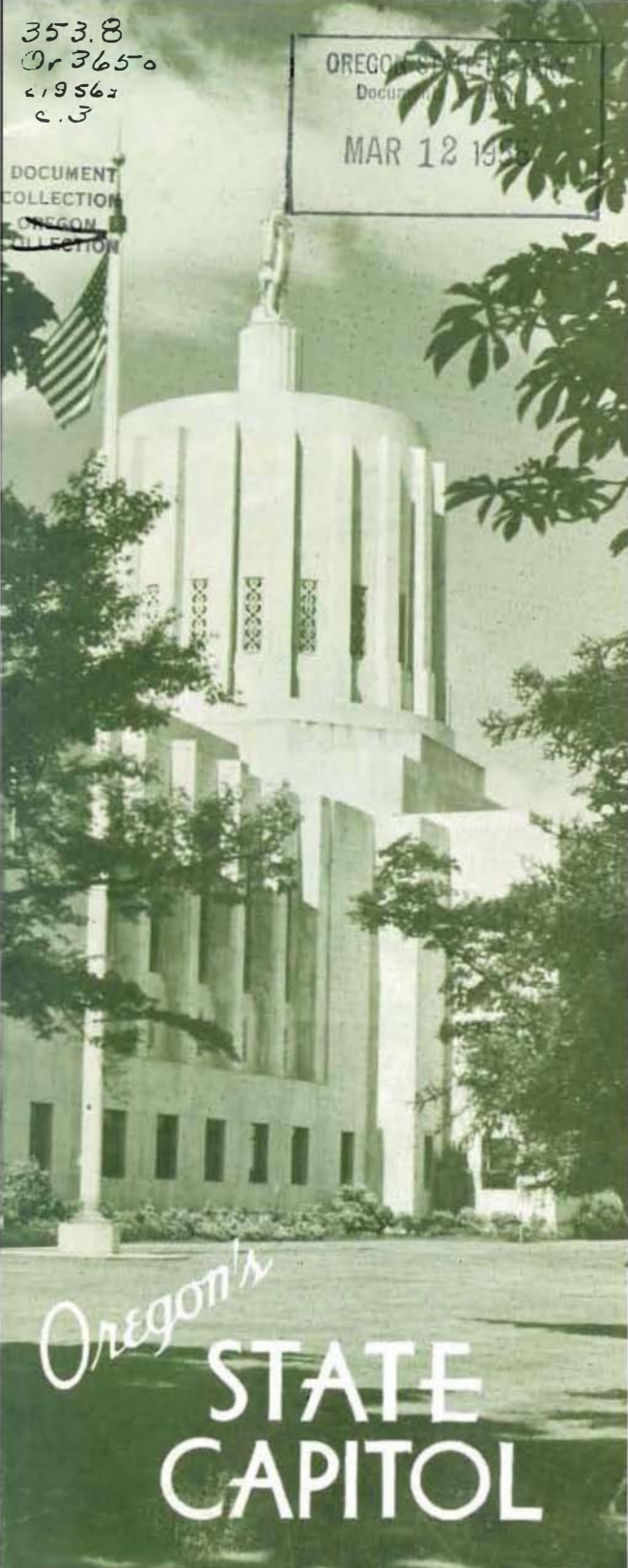


353.8  
Or 3650  
c19562  
c.3

OREGON STATE UNIVERSITY  
DOCUMENT COLLECTION  
MAR 12 1956

DOCUMENT  
COLLECTION  
~~OREGON~~  
~~COLLECTION~~



*Oregon's*

# STATE CAPITOL



East of capitol entrance is Leo Friedlander's sculpture of Captains Meriwether Lewis and William Clark being guided to the Pacific by Sacajawea.



Rev. Jason Lee, first Oregon missionary and colonizer, statue by G. M. Proctor, opposite McLoughlin statue.



West of capitol is full scale reproduction of famed Liberty Bell of which 53 were cast in France and given to U. S. government by American metals industries.



West of capitol entrance is marble group depicting a pioneer family making their way along the Oregon Trail in their covered wagon, sculptured by Leo Friedlander.



Dr. John McLoughlin, head factor of Hudson Bay Co., first to govern Oregon country, statue by Gifford Proctor, Sr.



In statuary group east of capitol is the Circuit Rider, a bronze statue symbolic of all pioneer circuit riding ministers and missionaries. Statue is by A. Phimister Proctor.

# Capitol Building and Grounds

**ENTRANCE**—The massive sculptures at the north entrance depict "The Covered Wagon" (west) and "Lewis and Clark Led by Sacajawea" (east). The maps on the rear of the blocks outline the old Oregon trail and the routes of Lewis and Clark. The sculptures are by Leo Friedlander of White Plains, New York, and are of Vermont marble 13 by 18 feet in size.

The inscriptions in marble at the left and the right of the entrance doors were prepared by Dr. H. B. Alexander of Scripps College, Claremont, California, and read:

"A free state is formed and is maintained by the voluntary union of the whole people joined together under the same body of laws for the common welfare and sharing of benefits justly apportioned."

"The mind of man knows no employment more worthy of its powers than the quest of righteousness in human affairs no goal of its labours that is superior to the discovery of the good in the guidance of life."

**ROTUNDA**—The decorations in bronze above the doors are by the sculptor Ulric H. Ellerhusen who also did the statue of the pioneer on the top of the building, the carvings of the sea otter, the beaver and the eagle on the front of the building, the wheat and the salmon at the ends, and the bronze of the great seal of the state on the rotunda floor.

From the floor of the rotunda to the ceiling is a distance of 106 feet. The walls of the rotunda and of the halls throughout the building are in rose travertine marble quarried in Montana. The baseboards and the ramps of the great stairways are in Arkansas radio black marble. The floor of the rotunda and the stairs are of Napoleon gray marble from Tennessee.

The eight medallions painted near the top of the walls of the rotunda represent the eight objects found in the state seal.

The inscription below the governor's balcony is by Dr. Alexander and reads:

"In the souls of its citizens will be found the likeness of the state, which if they be unjust and tyrannical then will it reflect their vices, but if they be lovers of righteousness, confident in their liberties, so will it be clean in justice, bold in freedom."

Above the stairs to the Senate is painted the seal of the provincial government of early Oregon (1843 to 1848), and above the stairs leading to the House of Representatives is the seal of the territorial government (1848 to 1859).

The murals on the walls of the rotunda were created and executed by Barry Faulkner and F. H. Schwarz and represent the following subjects: "Captain Robert Gray and His Ship, Columbia Rediviva at the Mouth of the River of the West, 1792" (southeast corner); "Meriwether Lewis and William Clark With Party at Celilo Falls on Their Way to the Pacific, 1805" (southwest corner); "The First White Women (Mrs. Narcissa Whitman and Mrs. Eliza Spalding) to Cross the Continent Welcomed by Dr. McLoughlin at Fort Vancouver, 1836" (northwest corner); "The Great Wagon Train Migration at The Dalles Before Departure for the Willamette Valley, 1843" (northeast corner).

The four smaller murals flanking the stairs to the legislative chambers are symbolic of Oregon industries.

**THE HOUSE OF REPRESENTATIVES** (second floor, west wing)—The walls are panelled in golden oak. The mural behind the speaker's desk by Faulkner depicts the historical meeting of Oregon settlers at Champoege when a vote was taken on the question of adhering to Great Britain or the United States. The names on the friezes near the ceiling are those of persons prominent in the history, background and development of Oregon.

For more perfect acoustics the ceiling is lined with a layer of felt covered by a muslin-type cloth. The lighting is indirect and comes from the small apertures in the ceiling.

The specially designed carpet pictures the Oregon fir tree, symbol of the state's great forests.

**SENATE CHAMBER** (second floor, east wing)—The wall panelling is of walnut. The specially designed carpet has alternate designs of a sheaf of wheat and a salmon symbolic of Oregon's farming and fishing industries. The mural at the rear of the president's desk depicts a scene in Salem when news of the admission of Oregon into statehood was received.

The ceiling construction and lighting are of the same modern design as that in the House of Representatives and the names in the friezes are of the same character as those in the House.

**GOVERNOR'S SUITE** (second floor, south center)—The massive circular table in the center of the reception room is of Carpathian elm and the replica of the former state capitol building inlaid in the surface contains 40 different kinds of wood. The state flower (Oregon grape) and the state bird (Western Meadow lark) are also shown in inlays.

The unique map above the fireplace on the east wall of the Governor's main office is the work of artist Barry Faulkner. This room is panelled in matched walnut.

**BOARD OF CONTROL ROOM** (adjoining Governor's suite to the east)—The panelling is in knotty pine. The conference table and high-backed chairs are of maple in an early American motif.

**TOWER**—A series of stairs lead up into the top from the fourth floor of the building. The top of the tower, exterior measurement, is 128 feet above ground, and from the top of the statue, 168 feet. The bronze statue, by Ulric H. Ellerhusen weighs 8½ tons and is covered by gold leaf to last 25 years. Four spot lights illuminate the statue at night. The figure is hollow and by means of a ladder and trap door, the interior may be reached. The view from the tower affords a panorama of the city of Salem and the surrounding country. Mt. Jefferson, Mt. Hood and sometimes Mt. St. Helens are visible from the tower.

**OFFICES**—Occupying most of the first, third and fourth floors are state offices and legislative committee rooms. The building houses the offices and departments of the Governor, Secretary of State, State Treasurer, State Land Board and Board of Control.

## HISTORY

Former capitol destroyed by fire, April 25, 1935  
New building authorized by legislative act  
November 9, 1935  
Construction begun, December 4, 1936  
Laying of cornerstone, June 17, 1937  
Opened for public inspection, July 2, 1938  
Dedicated October 1, 1938

## BUILDING DIMENSIONS

Length, 393 feet, 8 inches  
Width, 162 feet  
Height main building, 52 feet, 6 inches  
Height of statue, 24 feet  
Square feet area, approximately 131,750  
Cubic foot area, approximately 3,200,000  
Cost: Approximately \$2,500,000

Oregon's Capitol grounds are graced by more than 50 varieties of trees and bushes. Some are native to Oregon while the others are native to other areas of the nation, and foreign lands. Most of the trees will be found to the east of the capitol building.

Each tree is marked by an aluminum plate bearing the common and scientific name of the tree. These plates were prepared by the State Forestry Department and placed on the individual trees by the Salem Men's Garden Club. Members of the club first identified the trees, some identifications taking much research and effort.

Many of the trees were planted by interested citizens of the state who had obtained unusual and representative saplings for that purpose when the site of the capitol was decided upon in the late 1800's. In later years more trees were added.

Also to be found on the capitol grounds are many varieties of rhododendrons, azaleas, flowers, and other ornamental shrubs. Oregon grape, our state flower, is growing at each side of the capitol entrance. Following is a list of the trees which are marked.

- Albizzia
  - albizzia julibrissin
- American Elm
  - ulmus americana
- American Linden
  - tilia americana
- American Sycamore
  - platanus vulgaris
- Black Walnut
  - juglans nigra
- Camperdown Elm
  - ulmus glabra camperdownii
- Catalpa
  - catalpa bignonioides
- Catawba
  - catalpa species
- Chinese Azalea
  - rhododendron sinense
- Chinese Juniper
  - juniperus chinensis
- Chinese Torreya
  - torreya grandis
- Chinese White Magnolia
  - Magnolia denudata
- Common Horse Chestnut
  - aesculus hippocastanum
- Common Locust
  - robina pseudo-acacia
- Common Persimmon
  - diospyros virginiana

Crimson Magnolia  
    *magnolia soulangeana lennei*  
Cryptomeria  
    *cryptomeria japonica elegans*  
Douglas Fir  
    *pseudotsuga mucronata*  
Drooping Arbor-Vitae  
    *thuja orientalis pendula*  
European Forsythia  
    *forsythia europeea*  
European Linden  
    *tilia vulgaris*  
Field Maple  
    *acer campestre*  
Giant Cedar  
    *thuja plicata*  
Giant Sequoia  
    *sequoiaadendron giganteum*  
Gray Birch  
    *betula populifolia*  
Hornbeam  
    *carpinus caroliniana*  
Incense Cedar  
    *libocedrus decurrens*  
Japanese Maple  
    *acer palmatum*  
Japanese Purple Maple  
    *acer palmatum sanguineum*  
Japanese Thujopsis  
    *thujopsis dolobrata*  
Lovely Fir  
    *abies amabilis*  
Maidenhair  
    *ginkgo biloba*  
Noble Fir  
    *abies nobilis*  
Norway Maple  
    *acer platanoides*  
Norway Spruce  
    *picea excelsa*  
Ohio Buckeye  
    *aesculus glabra*  
Oregon Grape  
    *mahonia aquifolium*  
Oregon Maple  
    *acer macrophyllum*  
Oriental Spruce  
    *picea orientalis*  
Plumed Arbor-Vitae  
    *thuja occidentalis pyramidalis*  
Port Orford Cypress  
    *chamaecyparis Lawsoniana*  
Redbud  
    *cercis canadensis*  
Scotch Holly  
    *ilex aquifolium scotia*  
Scotch Pine  
    *pinus sylvestris*  
Shagbark Hickory  
    *carya ovata*  
Spanish Silver Fir  
    *abies pinsapo*  
Sweet Birch  
    *betula lenta*

Sweet Gum  
liquidambar styraciflua  
Tulip  
liriodendron tulipifera  
Vine Maple  
acer circinatum  
Western Cottonwood  
populus trechecarpa  
White Dogwood  
cornus alba  
White Linden  
tilia tomentosa  
White Pine  
pinus strobus  
White Varigated Box Elder  
acer negundo argentea variegatum  
White-Margined Holly  
ilex aquifolium albo-marginate

Published By the Department of State  
Earl T. Newbry, Secretary of State  
Salem, Oregon

TO

.....  
.....  
.....

Stamp