

**The unique use of Oregon woods and attractive style of architecture, combined with a sense of history and a bit of whimsy, make the State Forester's Office in Salem a special place to visit.**

Designed in the style of a rustic lodge, the State Forester's Office was built following a fire that destroyed the Oregon State Capitol, and the forestry offices that it housed, in 1935. When the Capitol was reconstructed, plans did not include room for the Department of Forestry. Hence, the new headquarters were built.

Federal programs to put people to work during the Depression provided the manpower needed for construction, and the building opened Dec. 1, 1938. It has housed the State Forester's Office and other administrative offices of the Department since that time.

Because of its historic significance, the State Forester's Office is included in the National Register of Historic Places.

Offices are finished in a variety of woods that were donated by private lumber companies. Small plaques on the walls identify each wood and donor. Many of these companies no longer exist.

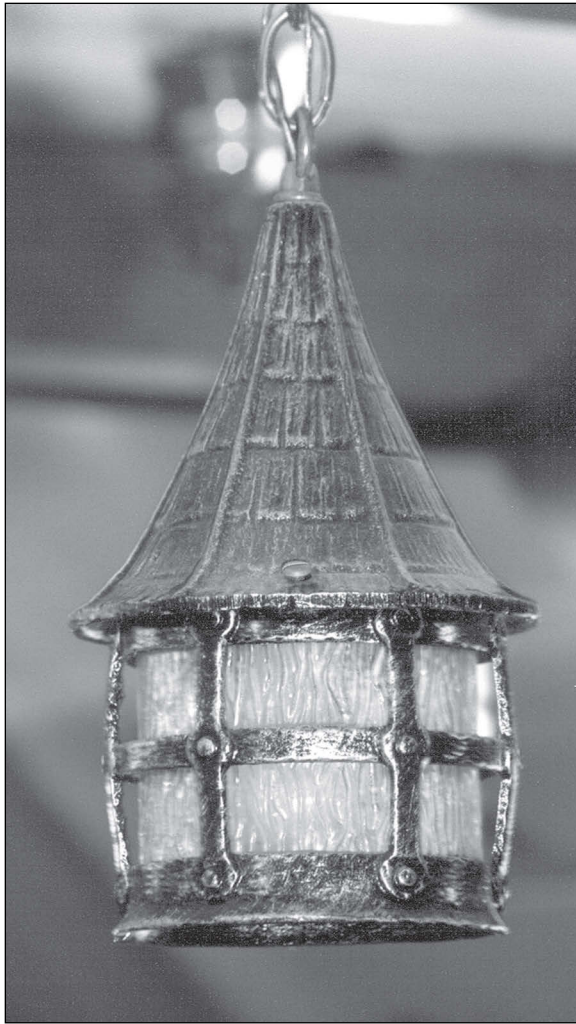


Eighteen native woods can be found in the interior finish. Conifers used were Douglas and noble firs, hemlock, Port Orford and western red cedars, Sitka spruce, ponderosa and sugar pines, western yew, western juniper, and tamarack.

Oregon hardwoods used were myrtle, bigleaf maple, golden chinquapin, madrone, white oak, red alder, and ash. To add unusual effects, crowfoot hemlock and some knotty and sap-stained woods were also used.

The Works Projects Administration provided workers to construct the main office, build the retaining walls, and construct the bridge across Mill Creek. They carried out landscaping plans with the state nursery, which was then located in Corvallis.

The National Youth Administration assisted with the interior woodwork. Participants in the Civilian Conservation Corps program built the rest of the buildings on the grounds.



A bronze statue representing the CCC's contribution graces the grounds of the relocated CCC headquarters office on the ODF compound which is now home to the Oregon Forest History Center.

The park-like ambience of the headquarters campus gives employees a daily taste of the outdoors and reminds them of what they're working for every day...Oregon's forests.

---

**Cover: Wood carvings grace the stairway leading upstairs in the main building. The carvings feature Oregon trees and wildlife, such as this bear.**

**Left, top: Fine craftsmanship went into the lamps that hang in the meeting room, upstairs in the State Forester's Office.**

**Left, bottom: Fireplace detail in the State Forester's Office.**

---

Oregon State Forester's Office  
2600 State Street  
Salem, OR 97310  
(503) 945-7200

*Open weekdays, 8:00 a.m.-5:00 p.m.  
Closed weekends and holidays.*

# Oregon State Forester's Office



*Listed on the National Register of Historic Places*

